

sFlowTrend-Pro

Network-wide visibility and control from the inventors of sFlow®

BREAKTHROUGH NETWORK TRAFFIC MANAGEMENT



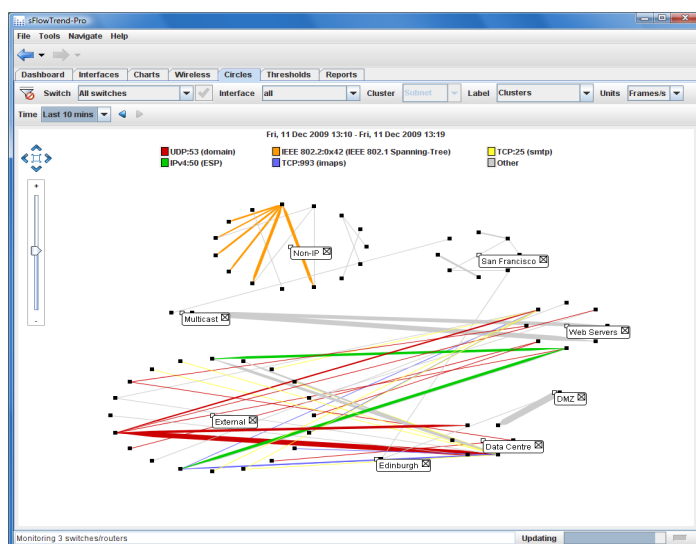
Continuous monitoring of all switches, routers, servers, and storage, using the industry standard sFlow, provides the integrated end-to-end visibility into performance that is essential in converged, virtualized and cloud environments.

Reliable and efficient integrated network services are essential for today's organizations to function properly. These organizations rely on the network infrastructure to provide applications (such as payroll, email, web, Citrix solutions, ERP, CRM, VoIP etc.) and to provide secure exchange of confidential information. As a consequence, changes in the behavior and usage of the network will impact productivity, resulting in negative financial consequences and sometimes creating legal liabilities. Even organizations with small networks are exposed to this risk, since just a small number of users or applications can cause significant disruption. As such, maintaining continuous visibility of the behavior and usage of the complete network, the performance of physical and virtual servers, and rapidly identifying emerging issues, is critical for organizations of all sizes.

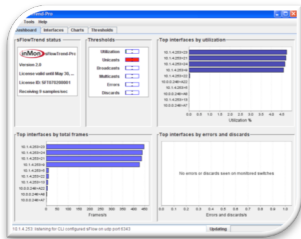
sFlowTrend-Pro is a solution tailored to the needs of small and medium sized networks. It continuously monitors all switches, routers, and servers in the network using the industry standard sFlow technology. sFlow provides scalable monitoring of all application, storage, server and network elements, both physical and virtual. sFlowTrend-Pro uses the data exported by sFlow to summarize network health, highlight

issues and anomalous behavior, and provide intuitive drill down for rapid identification of the root cause of any problem.

sFlow is included at no additional cost in most network switches and virtualized infrastructures. Consequently most environments have all the embedded instrumentation needed to start monitoring performance. An effective monitoring system, based on sFlow, coupled with sFlowTrend-Pro, provides the foundation for automation: reducing costs, improving efficiency, and optimizing performance.

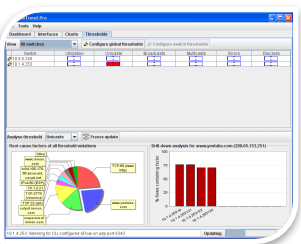


sFlow and sFlowTrend-Pro simplify management by providing a single, centralized view of all resources in the network. Network-wide visibility is essential for managing costs and optimizing performance.



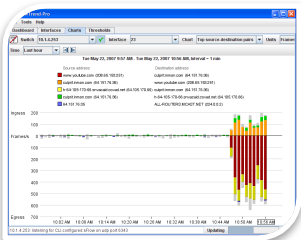
Centralized view

The dashboard gives a summary of the overall network health. It indicates whether any thresholds have been exceeded, and highlights the interfaces that are most utilized or are experiencing errors.



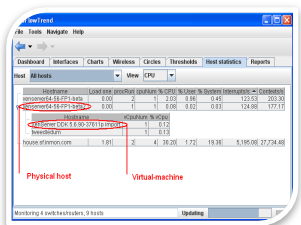
Identify the cause of threshold violations

The full visibility that sFlow provides allows sFlowTrend-Pro to analyze the causes of threshold violations. This automatic root cause analysis finds the most significant network traffic causing the threshold violation, and identifies the switch interfaces that the traffic is flowing over, allowing you to quickly determine if further action is required.



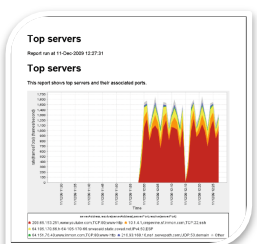
Identify the top users, applications, and inappropriate use

Real-time analysis of measurements identifies top sources and destinations, top connections, traffic flows by VLAN, multicast and broadcast flows, and visualization of traffic between subnets. Security oriented analysis is also available, for example, finding hosts that are exhibiting scanning behavior and identifying targets of denial of service attacks.



Integrated network and host performance monitoring

Host performance metrics are displayed highlighting the most heavily used systems and the relationships between physical and virtual hosts. Visibility of host performance and network traffic between virtual hosts as well as physical hosts enables integrated performance management.



Flexible querying and reporting

The reporting features allow you to query the accumulated historical data, and construct reports including tables and charts that highlight the behavior and performance of the network, servers and applications.

Features

- Dashboard provides overall view of network health and highlights issues.
- Intuitive drilldown to pinpoint the cause of congestion, broadcasts and other problems.
- Real-time reporting on network usage by end hosts.
- Identification of top protocols and applications in use on your network.
- Identification of security issues in the network, such as hosts showing scanning behavior.
- Historical trending of utilization and network usage. One week of historical data is available by default.
- Configurable thresholds allow easy monitoring of key switches or interfaces, and deviations from baseline.
- Automatic root cause analysis identifies the traffic that caused a threshold to trip, allowing immediate remediation.
- Graphical view of traffic between different regions in the network.
- Visualization of relationships between physical and virtual hosts.
- Real-time summaries and trends of server performance metrics.
- Flexible querying and historical reporting on accumulated traffic data.
- Support for industry standard sFlow - see <http://www.sflow.org> for a list of switch vendors supporting sFlow.
- Easy switch configuration using SNMP.

The unified view of performance provided by sFlowTrend-Pro makes it possible to exploit the flexibility of virtualization and convergence

Benefits

- Quickly understand who is using the most bandwidth on your network, and what they are doing.
- Enforce corporate acceptable network use policies.
- Easily determine whether the network is healthy.
- Rapidly identify the cause of any problems or deviation from baseline with thresholds and intuitive drilldown.
- Understand trends in usage and accurately target upgrades.
- Optimize performance of servers and network in a converged environment.
- Generate management reports to illustrate current and historical network usage and performance.
- Simple to install and use, so you can focus on the network, not the monitoring software.

For further information on sFlowTrend-Pro, visit <http://www.sflowtrend-pro.com>, or to request an evaluation visit <http://www.myinmon.com>

InMon Corp
1 Sansome Street, 35th Floor,
San Francisco, CA 94104
Tel: +1 (415) 946 8901
Email: sales@inmon.com